

Gravotech provides an extremely wide selection of jigs and holding devices, developed for and with customers.

For flat engraving



Standard celeron jigs
150 mm (5.9")
Ref. 10165



Aluminium jigs
150 mm (5.9")
Ref. 20189



Aluminium jigs
240 mm (9.5")
Ref. 21131



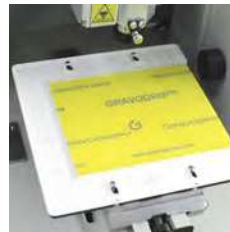
Large plate, aluminium
jigs
310 x 110 mm
(12" x 4")
Ref. 20191



Gravofoil™ vice
Ref. 22868



Gravogrip™
Several sizes available.
Please contact us for
more details. See p.13.



Support table +
Gravogrip™
Ref. 70997 for M20/
M20XL



Support table + Gravogrip™
Ref. 71116 for IS200
Ref. 45697 for M40

For jewellery items



Jigs for jewellery,
bracelets and medals
Ref. 28192



Watch/medal jigs
fits any shape
Ref. 10182



Signet ring jigs
with protection pad
Ref. 20194



Perfect for baby identity
bracelets
Ref. 22870



Jigs for rigid bangles
Ref. 51729



Jig for ring with large
stone
Ref. 30050



Jigs for wedding rings
Réf. 12500



Jigs for bracelets
Réf. 77961



Jigs for bracelets and
pendants
Réf. 77320

For gifts and tableware



Spectacle bow jigs
adjustable width
Ref. 20190



Cutlery jigs
with adjustable stops
Ref. 20129



Cutlery jigs
with relocatable pins
Ref. 22370



Celeron badge jigs
103 x 36 mm
(4" x 1.4")
Ref. 20128



Pen & tubular object jigs
Ref. 10169



Clip pen jigs
Ref. 20842



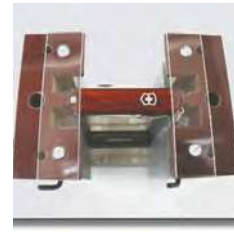
Multigrip jigs with
sliding pins & stops
Ref. 20196



Large plate/salver jigs
with relocatable pins
Ref. 20192



Cell phone jigs
Ref. 49510



Swiss army knife jigs
Ref. 28067

Specific applications



Circuit board jigs
with locating pins
Ref. 16638



Celeron unmachined
jigs
152 x 38 mm
(6" x 1.5")
Ref. 10179



Funeral plate jigs for M20
164 x 50 mm
(6.5" x 2")
Ref. 47697