



INTEGRABLE DOT PEEN

XF510m



GRAVOTECH
E X P R E S S I O N O F T H I N G S



The master of marking Datamatrix codes, this electromagnetic dot peen engraver builds upon our foundations with dot peen to meet the highest standards of precision.



HIGH-PERFORMANCE

With automatic density adjustment to maximize marking speed, readability, automatic part detection and multi-level marking the XF510m performs at its best constantly. Fitted with multi dot technology making it possible to carry out deeper markings it becomes your go-to solution for direct part marking.

Utilizing high precision zero play ball screws and high rigidity guide rails, the XF510 is designed to be robust and running problem-free in the most demanding of environments.

I-SENSE

The I-Sense function detects the surface of the workpiece, automatically adjusts the height of the Z-axis and starts marking with no intervention on the part of the operator. Several adjustment modes are available: automatic mode (I-Sense), programmable mode and normal mode, which allows manual adjustment.

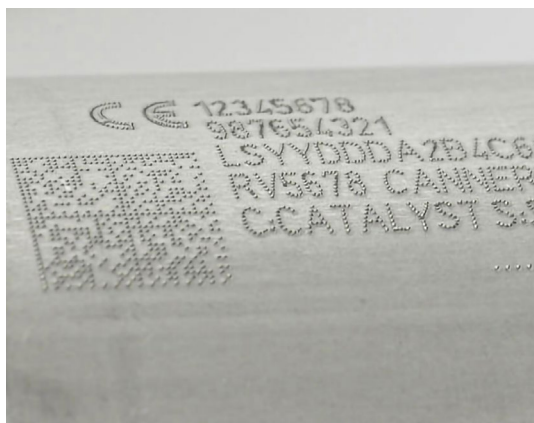
DYNAMIC DOT CONTROL

Obtain a perfect result every time with the XF510m DDC™ (Dynamic Dot Control) feature, a technology which enables automatic adjustment of point density according to the required size and depth of marking. Your markings are of high quality and easy to read, whatever your application. Two setting modes available: automatic and manual.

SEE OUR VIDEO



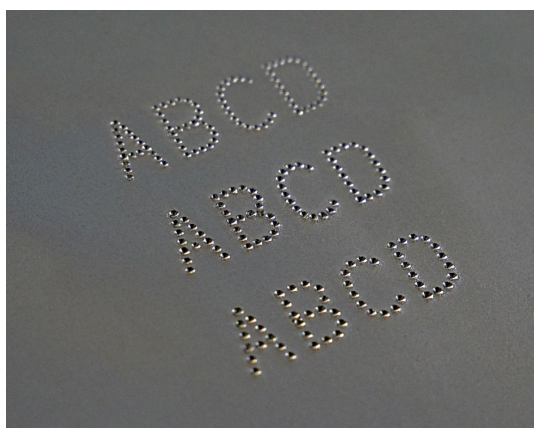
KEY FEATURES



Mark what you want

Be it 2DCode, Dates, Counters, Variables, Text, Serial numbers, shape, logo, batch number, in all languages.

Mark it on metal and some hard plastics the electromagnetic technology makes it easier and more accurate than ever.

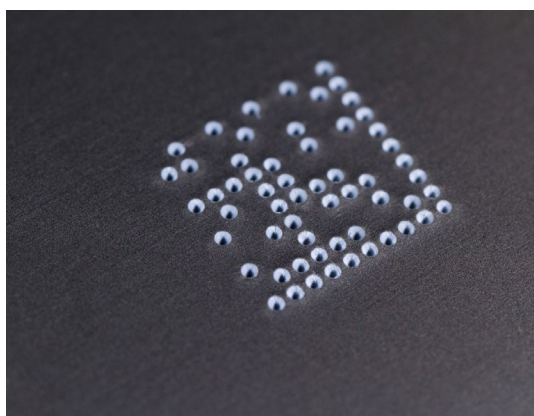


Same spot marking

With the ability to accurately mark the same place with up to 10 impacts it is now possible to carry out clearer markings on difficult material.

This meets the depth requirements of most industrial sectors!

With just the one stylus the XF510m is a versatile, universal solution.



Datamatrix specialist

Datamatrix code marking requires meeting the standards and respecting the real-world traceability workflow. The electromagnetic technology allows us to obtain a perfect reading of the 2D code in all situations: Grade A Same dot diameter Equal distance between dots. Can be read back from any direction. 0% error.

Mark any type of 2D code: Datamatrix, QR code, UID, GSI, Unicode characters safe in the knowledge that our ultra-precise MIL stylus will be providing unparalleled accuracy.

LEARN MORE ABOUT THIS PRODUCT



CONTROLLER

XCOM



Simplified user experience

The XCOM controller looks like a tactile tablet (7 "/18 cm) and is just as easy to use. From its tactile screen, the operator can quickly set up, edit, program templates, and launch markings. No PC required.

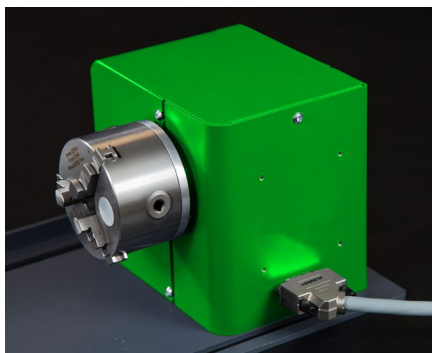
Hyperconnected XCOM

The ideal controller for industry 4.0. Just choose your preferred field bus (Profinet, Ethernet IP or EtherCAT) to integrate the XCOM to your process and enjoy a reduced commissioning time and full interoperability on your production line, whichever the PLC and devices used.

Empower your data

The data collection and storage feature in the XCOM simplifies the traceability of your products: generate history files, creates dashboards to monitor machines, track your productivity, and set up preventive maintenance. This controller is a powerful tool that will save time, money, and headaches!

ACCESSORIES



Rotary Device



Head Adjustment Device



Adaptive connections



Automatic Z-Axis



Process Control Box



Protective Covers

APPLICATIONS



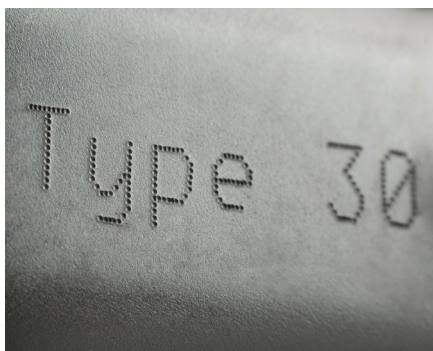
Aerospace part marking



Automotive marking



Marking tools for identification and equipment traceability



Aluminum marking



Steel marking



Stainless steel marking

SERVICE & SUPPORT



Training

Our training modules are designed to optimize your use of our solutions and are available for our full range of machines, software and accessories.



Technical Support

We bring you local support in your language in more than 50 countries, where we have established presence directly and with our distribution partners.



Maintenance

Thanks to experience gathered with Gravograph and Technifor and our global presence in more than 50 countries with 150 Gravotech technicians and our distributor partners, we can offer you a wide range of services.

MAKE YOUR SAMPLES



TECHNICAL DATA

XF510 m

Model	XF510 Cm	XF510 Sm	XF510 Dm
Technology	Electromagnetic		
Machine dimensions (L x W x H)	158 x 102 x 275 mm (6.2 x 4 x 10.8 in)	231 x 195 x 309 mm (9.1 x 7.7 x 12.2 in)	331 x 195 x 309 mm (13 x 7.7 x 12.2 in)
Machine weight	4.7 kg (10.4 lb)	8.8 kg (19.4 lb)	10.2 kg (22.5 lb)
Marking area (L X W)	50 x 20 mm (2 x 1 in)	100 x 80 mm (4 x 3.15 in)	200 x 80 mm (8 x 3.15 in)
Communication Interfaces	RJ45, USB(x2), RS232, 8I/4O, Process IO		
Fieldbus (option)	Profinet, Ethernet IP		
Embedded fonts	10		
Display	7" color touchscreen		
Languages available	19		
2D codes	Datamatrix, QR Codes		
Material hardness	<62		
Input voltage	100 - 240 V AC		
Operating temperature	5° to 45° (41 to 113 F)		
Rated power consumption	260 VA		
Safety Performance Level (option)	PL d		



GRAVOTECH
EXPRESSION OF THINGS

info@melcomus.co.za
+27 11 873 1941
+27 21 552 3646
www.melcomus.co.za

MELCO U SASAZO
Unit 5 Monte Place, 15 Monte Carlo Drive,
Raceway Industrial Park, Germiston, Gauteng

Unit H10 Centurion Business Park, Democracy
Way, Milnerton, Cape Town

Follow us:

